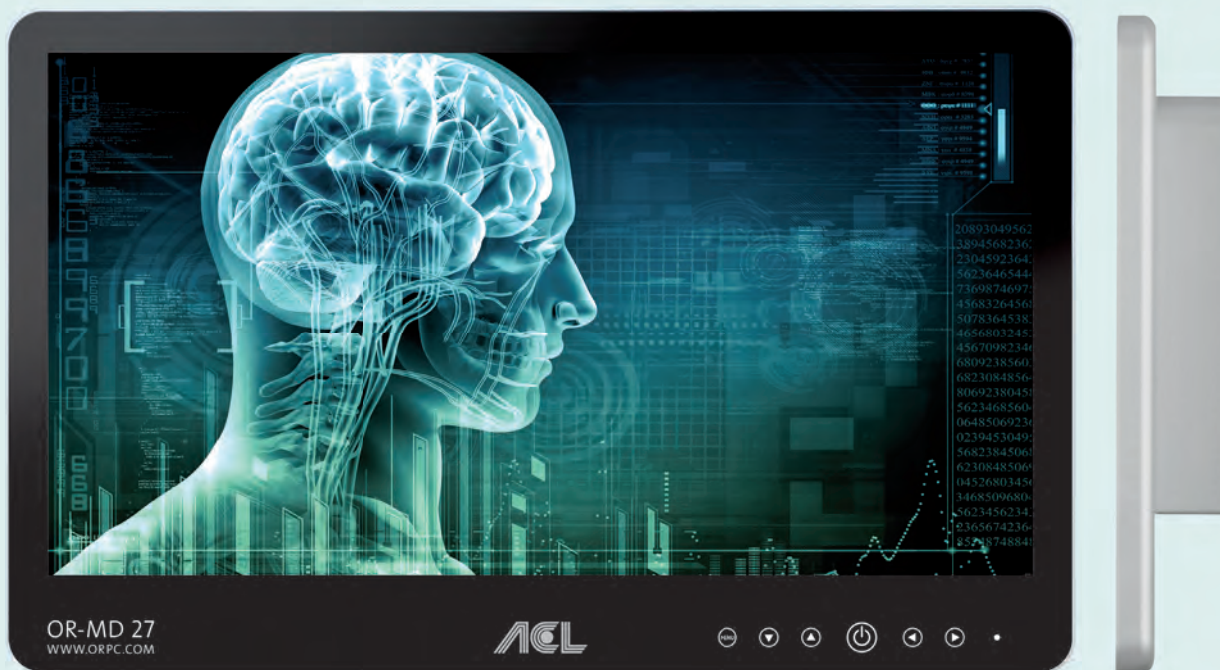


OR-MD

ACL OR-MD 27

MEDICAL DISPLAY



- completely closed aluminum housing
- 27" TFT-Display with widescreen-format
- Display with all-round viewing angle
- Hygienic design with full glas front
- resolution 1920 x 1080 Pixel



TECHNICAL DATA FOR ACL OR-MD 27

General descriptions	
design	27"-TFT-display with high resolution , 1920 x 1080 pixels
housing	completely closed aluminum housing
cooling	passive, maintenance-freezone cooling system developed by ACL
cleaning	wiping all exterior surfaces with commercially available disinfectants
acceptable ambient conditions	
temperature	when stored: 0 bis +60°C; in operation: +5 bis +40°C
relative humidity	when stored: 5% bis 95%; in operation: 10% bis 90%, non-condensing
supplementary standard	
DIN EN 60601-1: 2013	Medical electrical equipment – General requirements for basic safety and essential performance
DIN EN 60601-1-2: 2016	Medical electrical equipment – General requirements for basic safety and essential performance Collateral standard – Electromagnetic compatibility – Requirements and tests

Narrow Description	Standard equipment	Options
lacquering	light grey RAL 7035	germ-reducing nanolacquering, other color tones in conformity with RAL
protective pane	integrated	touchscreen
dimensions (B x H x T)	ca. 661 x 445 x 59 mm	–
mounting	built-in VESA-100 interfaces	extensive mounting solutions available as accessories
weight	9.1 kg (without accessory)	customized design available depending upon equipment
power supply unit	90–240 V / 50 / 60Hz / internal 110 W	external power supply, DC 24 V
USV	none	external (as much as 10 minutes of power failure bridging)
front keypad	On/Off-button, six buttons for OSD	–
Display module		
Display	internal TFT display, digital display control with DualChanel LVDS, 16.7 million colors Solution 1920 x 1080, Contrast 1000:1, Brightness 250 cd/m², Viewing Angle 178°/178°	
Interface		
digital	DVI-I, DP	VGA D-SUB-15, HD-SDI
s-video	4-polig mini DIN	
composite video	RCA (PAL/NTSC)	
programming	RS232	
OSD		
language selection	german	english, french, italian, hispanic, polish
VGA	size and position, clock and phase	
viewing settings	brightness, contrast, color temperature, gamma, input signal	
Deliefery content		
basic device	OR-MD 27	
cabelkit	DVI-I	VGA, Component Video, S-Video, Composite-Video
accessories	manual, power cord	

Note: Not all options can be combined with one another. Other equipment available at your request.
We reserve ourselves the right to make changes for technical advancement © ACL GmbH 2018.1

ACL GmbH

Deutscher Platz 4, D-04103 Leipzig
phone +49 341 230 78-0
fax +49 341 230 78-99

